

Product datasheet for **TA802606**

Progesterone Receptor (PGR) Mouse Monoclonal Antibody [Clone ID: OTI2E2]

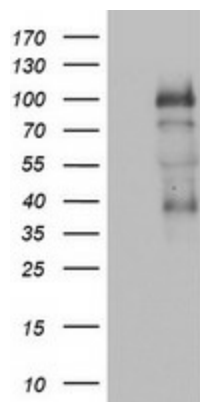
Product data:

Product Type:	Primary Antibodies
Clone Name:	OTI2E2
Applications:	IHC, WB
Recommend Dilution:	WB 1:2000, IHC 1:150
Reactivity:	Human
Host:	Mouse
Isotype:	IgG1
Clonality:	Monoclonal
Immunogen:	Human recombinant protein fragment corresponding to amino acids 1-298 of human PGR (NP_000917) produced in E.coli.
Formulation:	PBS (PH 7.3) containing 1% BSA, 50% glycerol and 0.02% sodium azide.
Concentration:	1 mg/ml
Purification:	Purified from mouse ascites fluids or tissue culture supernatant by affinity chromatography (protein A/G)
Predicted Protein Size:	98.8 kDa
Gene Name:	progesterone receptor
Database Link:	NP_000917 Entrez Gene 5241 Human
Background:	This gene encodes a member of the steroid receptor superfamily. The encoded protein mediates the physiological effects of progesterone, which plays a central role in reproductive events associated with the establishment and maintenance of pregnancy. This gene uses two distinct promoters and translation start sites in the first exon to produce two isoforms, A and B. The two isoforms are identical except for the additional 165 amino acids found in the N-terminus of isoform B and mediate their own response genes and physiologic effects with little overlap. [provided by RefSeq, Jan 2011]
Synonyms:	NR3C3; PR
Protein Families:	Druggable Genome, Nuclear Hormone Receptor, Transcription Factors
Protein Pathways:	Oocyte meiosis, Progesterone-mediated oocyte maturation

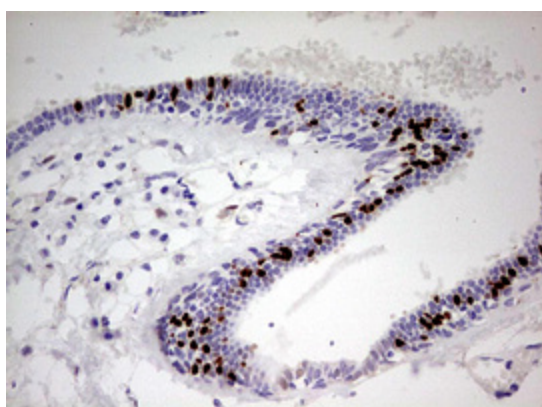


[View online »](#)

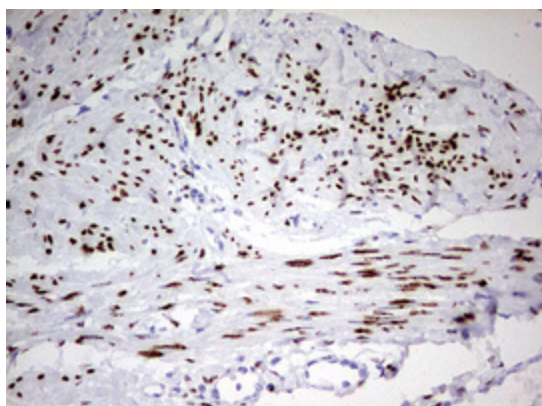
Product images:



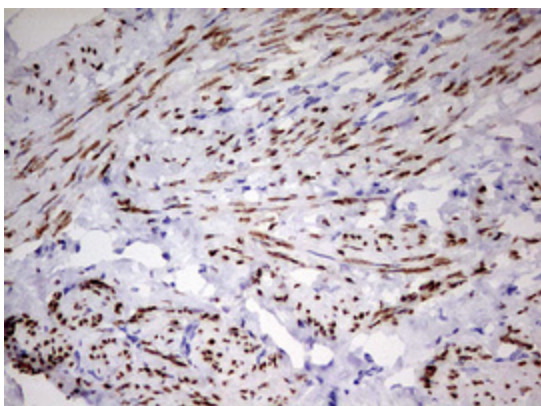
HEK293T cells were transfected with the pCMV6-ENTRY control (Left lane) or pCMV6-ENTRY PGR ([RC221303], Right lane) cDNA for 48 hrs and lysed. Equivalent amounts of cell lysates (5 ug per lane) were separated by SDS-PAGE and immunoblotted with anti-PGR. Positive lysates [LY424456] (100ug) and [LC424456] (20ug) can be purchased separately from OriGene.



Immunohistochemical staining of paraffin-embedded Human breast tissue within the normal limits using anti-PGR mouse monoclonal antibody. (Heat-induced epitope retrieval by 10mM citric buffer, pH6.0, 120°C for 3min, TA802606)



Immunohistochemical staining of paraffin-embedded Human endometrium tissue within the normal limits using anti-PGR mouse monoclonal antibody. (Heat-induced epitope retrieval by 10mM citric buffer, pH6.0, 120°C for 3min, TA802606)



Immunohistochemical staining of paraffin-embedded Adenocarcinoma of Human endometrium tissue using anti-PGR mouse monoclonal antibody. (Heat-induced epitope retrieval by 10mM citric buffer, pH6.0, 120°C for 3min, TA802606)